



Recover & Rehabilitate existing mineral assets

Future Mines & Mineral 2021

24 FEBRUARI 2021

disclaimer

- This presentation material (the "Presentation") has been prepared by Grängesberg Exploration Holding AB (publ) (the "Company"). This Presentation does not constitute or form part of any offer or invitation to purchase or subscribe for, or any offer to underwrite or otherwise acquire, any shares or any other securities in the Company. Neither shall the Presentation or any part of it, nor the fact of its distribution or communication, form the basis of, or be relied on in connection with, any contract, commitment, or investment decision in relation thereto. By attending a meeting where this Presentation is presented, or by reading the Presentation, you will be deemed to have (i) agreed to all of the following restrictions and made the following undertakings and (ii) acknowledged that you understand the legal and regulatory sanctions attached to the misuse, disclosure or improper circulation of the Presentation.
- The Presentation is private and confidential, has been furnished to you solely for your information and may not be reproduced, redistributed or disclosed in any way, in whole or in part, directly or indirectly, to any person without the prior consent of the Company. This Presentation and its contents are confidential and you and your directors, officers, employees, agents and affiliates must hold this Presentation and any oral information provided in connection with this Presentation in strict confidence. Failure to comply with this restriction may constitute a violation of applicable laws, rules or regulations.
- Certain industry and market data contained in this Presentation has come from official or third party sources. Third party industry publications, studies and surveys generally state that the data contained therein have been obtained from sources believed to be reliable, but that there is no guarantee of the accuracy or completeness of such data. While the Company believes that each of these publications, studies and surveys has been prepared by a reputable source, none of the Company or any of its subsidiaries or affiliates or any of such person's directors, officers, employees, advisors or other representatives has independently verified the data contained therein. No representation or warranty (express or implied) is made as to, and no reliance should be placed on, the fairness, accuracy, completeness or correctness of any information or opinions from third parties expressed herein. In addition, certain of the industry and market data contained in this Presentation come from the Company's own internal research and estimates based on the knowledge and experience of the Company's management in the market in which the Company operates. While the Company believes that such research and estimates are reasonable and reliable, they, and their underlying methodology and assumptions, have not been verified by any independent source for accuracy or completeness and are subject to change without notice. Accordingly, undue reliance should not be placed on any of the industry or market data contained in this Presentation.
- This Presentation contains "forward-looking" statements. These forward-looking statements can be identified by the fact that they do not relate only to historical or current facts. In particular, forward-looking statements include all statements that express forecasts, expectations, plans, outlook and projections with respect to future matters, including trends in results of operations, margins, growth rates, overall market trends, new product developments, regulatory approvals and general economic conditions. By their nature, forward-looking statements involve risk and uncertainty because they relate to events and depend on circumstances that will occur in the future. There are a number of factors that could cause actual results and developments to differ materially from those expressed or implied by these forward-looking statements, including factors that are outside the Company's control including currency exchange rate fluctuations, delay or failure of development projects, production problems, unexpected contract breaches or terminations, government-mandated or market-driven price decreases, introduction of competing products, the Company's ability to successfully sell products, changes in reimbursement rules and governmental laws and interpretation thereof, and unexpected cost increases. Any forward-looking statements made by or on behalf of the Company speak only as of the date they are made. The Company does not undertake to update forward-looking statements to reflect any changes in the Company's expectations with regard thereto or any changes in events, conditions or circumstances.

Grängesberg Exploration Holding AB

High lights

GRANGEX listed since 2008 on NGM SME Stockholm
(Ticker NGM:GRANGX)

Grangesberg Exploration AB was acquired 2020 and
the listed company changed name

Latest capitalization , January 2021 ; 47 MSEK
Option T03 & TO4 due May-21—Jan-22 ; 74 MSEK

Market capitalization: 220 MSEK

Approx 7300 shareholders

What we do

- We identify, acquire and develop Swedish mineral projects with high profitability potential and low initial capital investment needs

A tactical view – gradual build positive cash flows

- Sala Bly – cash flow positive operations
- The Grängesberg Apatite Project – possible start 24 - 30 months
- The Dannemora Restart Project – possible start 36 -40 months

THE GRÄNGESBERG APATITE PROJECT

A recovery project in the circular
economy with REE potential

Grängesberg Apatite "at a glance"

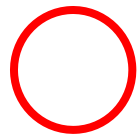
A stand-alone project

- Lease hold on tailing dams and industrial area
- Jan Matts Dam: 4-5 Mt, c 2,4% P, 0,3% REE*
- Time to Production: c. 24-30 months
- LoM: 7 years
- Expected Production: 75 000 tpy (c. 17% P, 0,7% REE)
- REE content: Y, La, Ce, Pr, Nd, Eu



* Historical data from SSAB filing 1990 with the Mining Inspectorate

Overview Grängesberg



Apatite/REE project



Apatite/REE extension option



Figure 5-1

JanMattsdammen – in operation 1950 - 1973

1960



1975

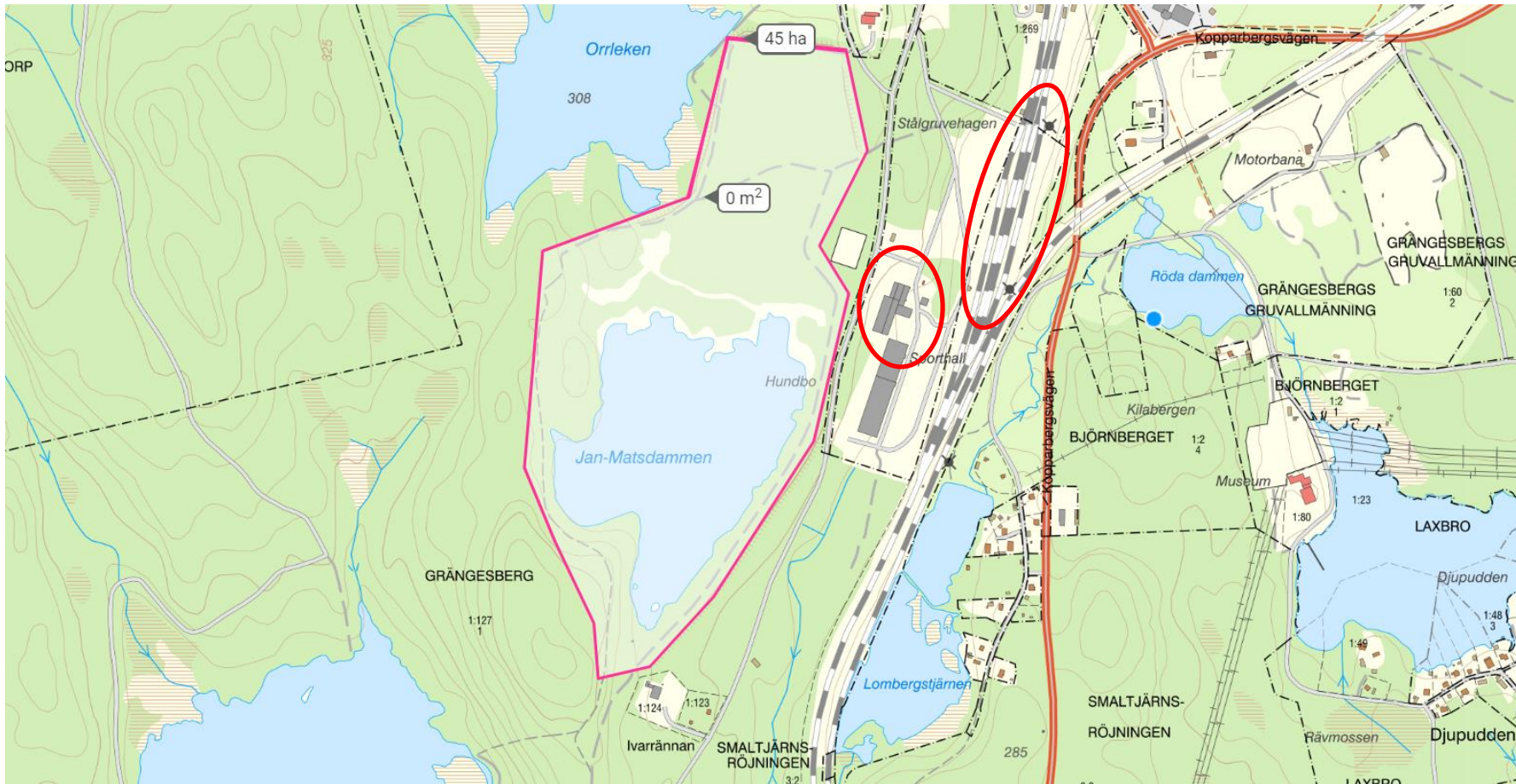


2020



Grängesberg Apatite project

Jan Matts tailing dam – The first step

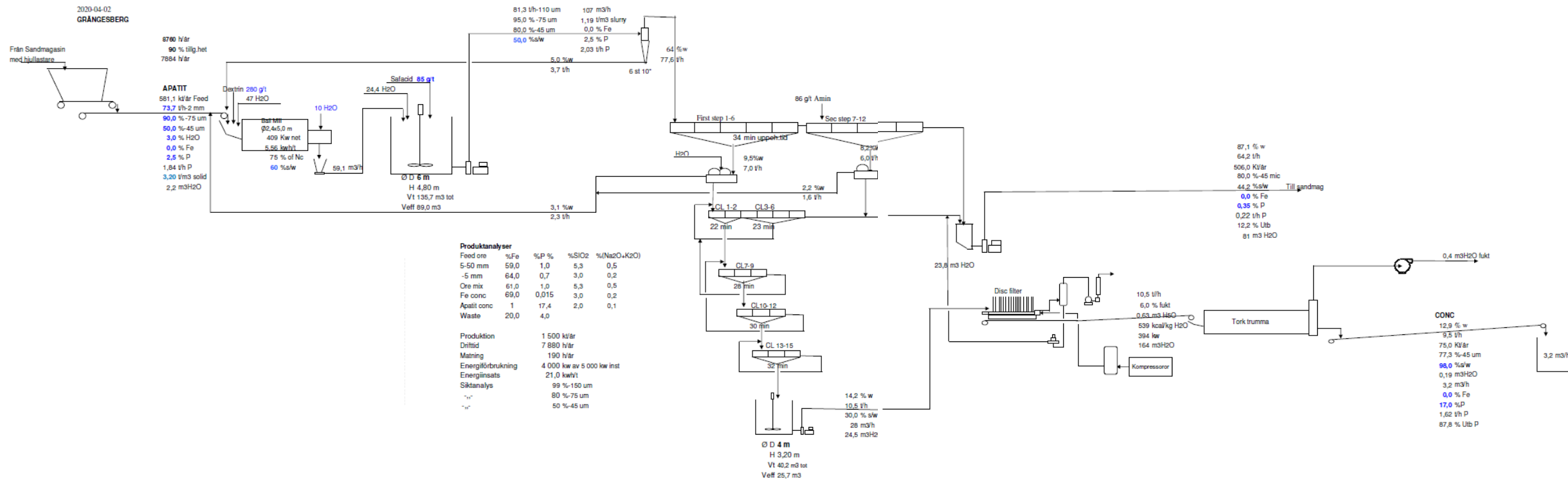


Grängesberg Apatite Project Lomberg - Existing Industrial Area adjacent to the existing marshalling yard



Grängesberg Apatite Project

Proven flotation plant layout to be optimized



DANNEMORA RE-START PROJECT

The Dannemora sustainability potential

- High grading the magnetite ore
- Productive mine infrastructure
- Existing rail and port logistics
- Underground tailing deposit

The reasons for the bankruptcy 2015

Uncomplete process tests

Pending critical investments

Bad Timing

The potential – state-of-the-art process design to meet the demand of the market

Upto 2015

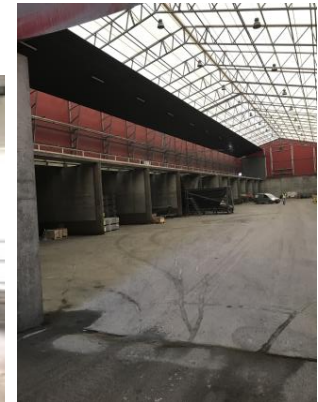


2024 =>



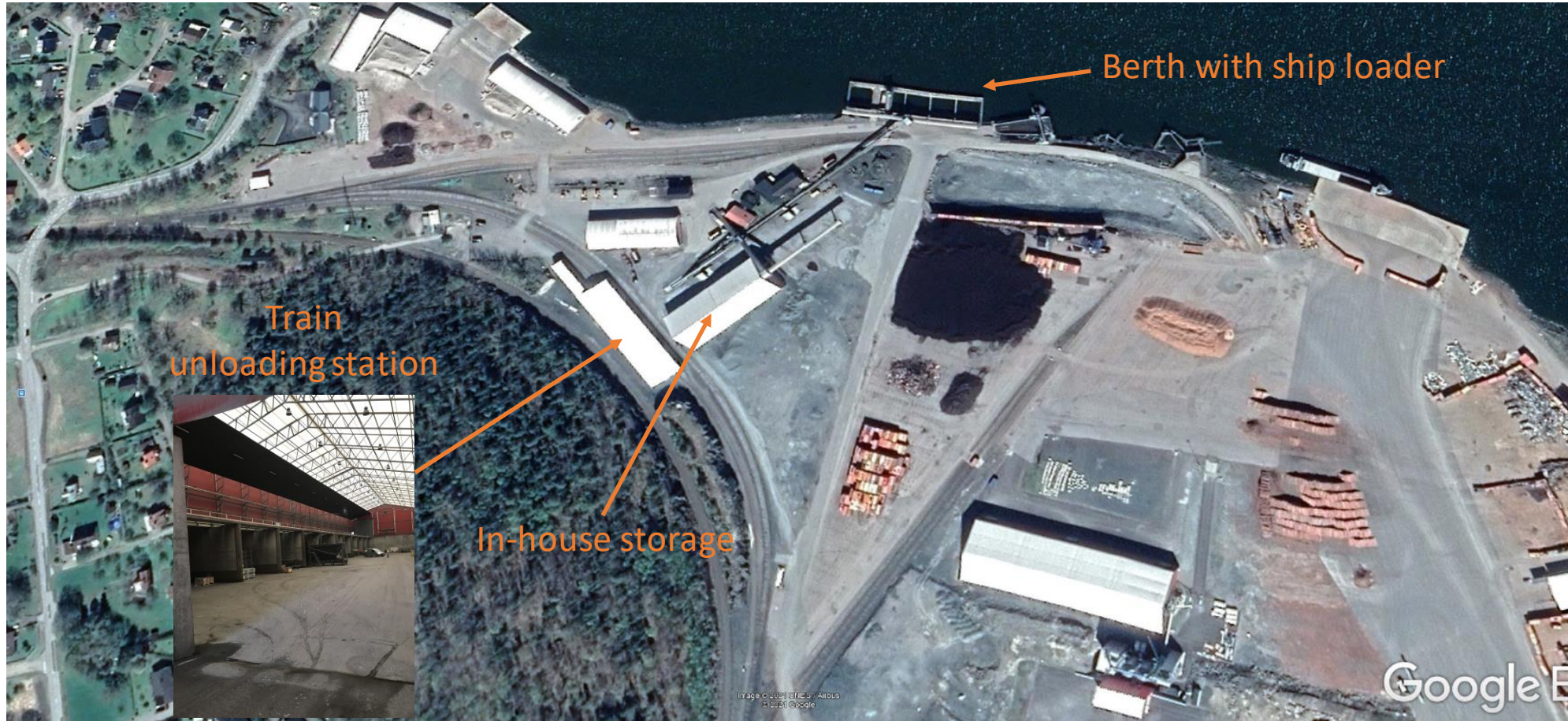
Dannemora benefits from existing installations

- Mine installations
 - modern logistics and infrastructure, 48 sqm mine access ramp system, declines, central shaft, ventilation shafts, electrical and media installations
- Industrial site
 - Head frame with hoisting system, marhalling yard, trail loading station, process building, complete incoming 20 KV power and switchgear system, fencing, office buldings,
- 40 km Railway & harbour logistics



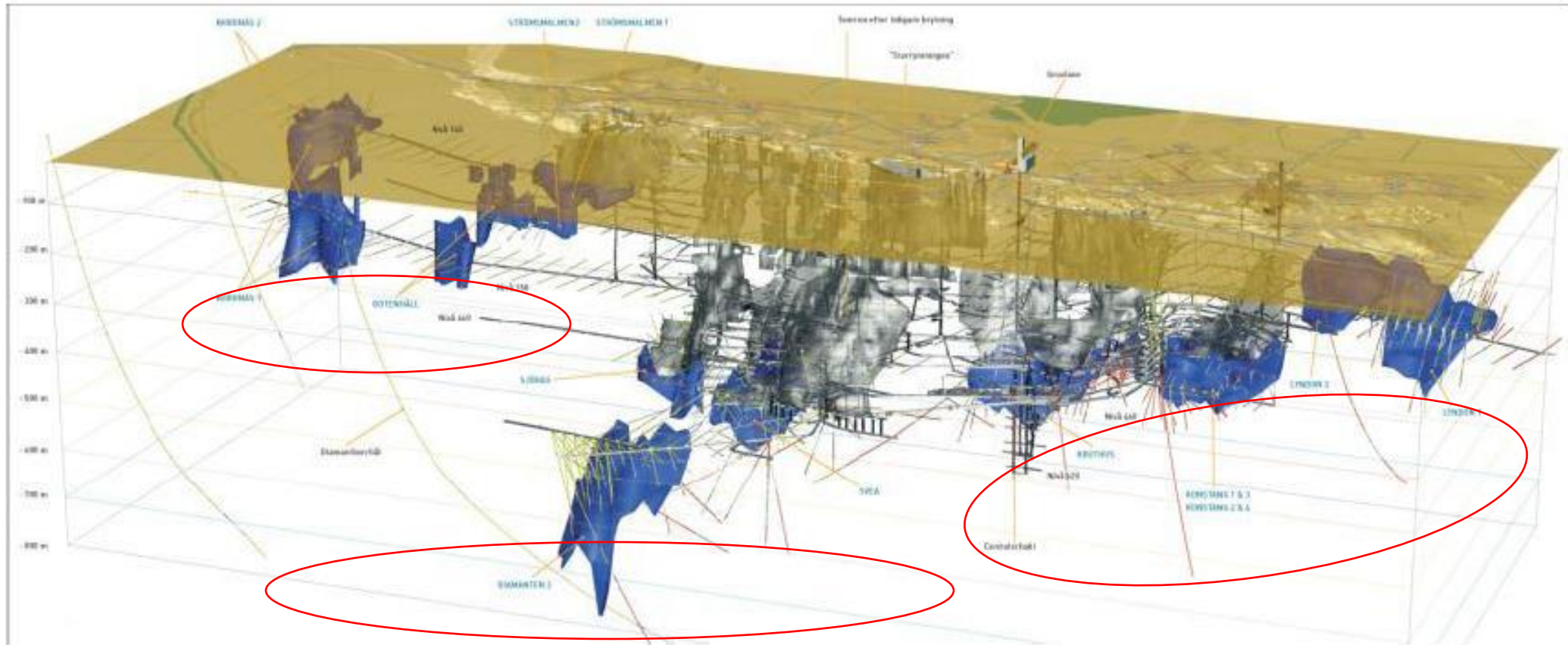
Dannemora

Complete harbour logistics



Dannemora

25+ Mt mineral resources with "large" exploration potential in a modern mine infrastructure



Next Step during 2021

Grängesberg Apatite

- Process tests by GTK
- Scoping study
- Environmental Application Golder
- Definite Feasibility study

Dannemora

- Process tests by SGS Lakefield
- Scoping study by Golder
- Environmental Application
- Definite Feasibility Study



GOLDER



Thank you

christer.lindqvist@grangesbergexploration.se

www.grangesbergexploration.se